

Dr Anas Olabi, Consultant Paediatrician
Sara Richardson, Staff nurse



September 2021

Aim/purpose:

To improve the quality of communication for 10% of CYP with complex epilepsy amongst healthcare professionals from poor (missing and fragmented) to good (comprehensive and up to date) to improve the patient outcomes for epilepsy management and emergency care by March 2022.

Our improvement journey



September-November 2021

Understand the problem, engage with stakeholders to decide on change ideas

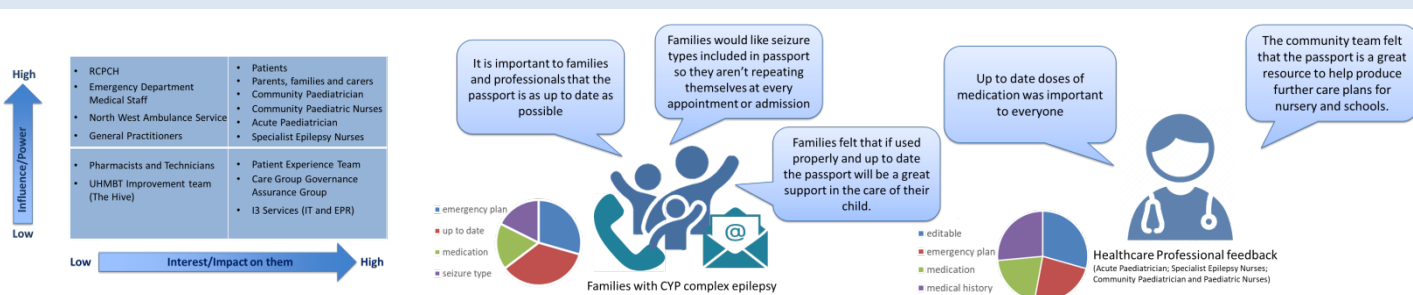
December 2021-March 2022

Design Epilepsy EPR linked passport, PDSA test cycles to adapt

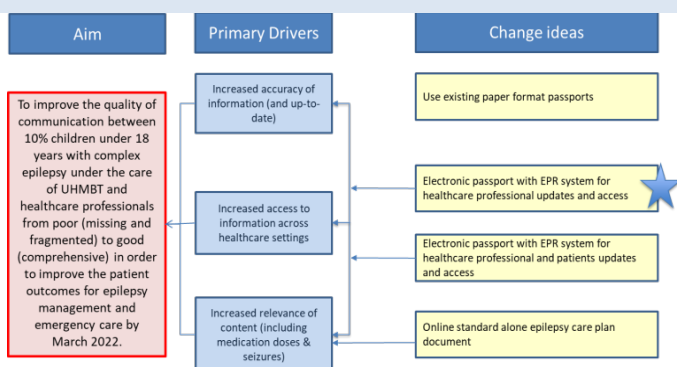
March 2022 onwards

Continue to develop and embed

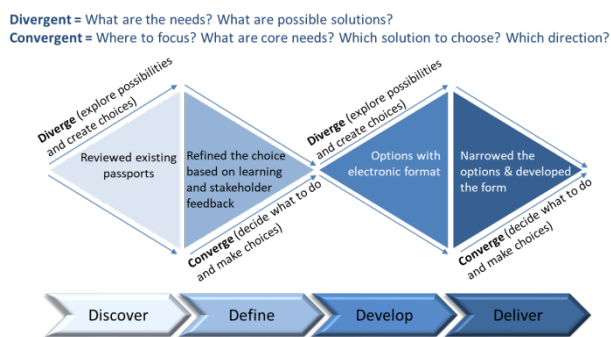
Stakeholder Engagement



Driver Diagram



Design Process



Reflections

Successes

- Team working
- Patient family input
- Partnership support - amazing IT/EPR input
- Encouragement and support from families and colleagues
- EPR linked Epilepsy passport

Challenges

- Time to dedicate
- Small but passionate team
- Lack of dedicated PESN
- Winter & COVID pressures affecting priorities
- COVID minimising face-to-face contact
- Service across multiple sites and wide geographical area
- Timeframe for full testing and measurement of success

Learning

- Stakeholder engagement was key
- Partnership working really supported this project
- Design developments take longer than you think
- Plan in measurement for improvement to demonstrate the impact

Next Steps

Next

- Continue to lobby to appoint PESN to further development of the Epilepsy QI project
- Passport to be reviewed and approved by governance structures so that it is embedded into practice

Share & Spread

- Share achievements with RCPCH epilepsy passport team for further development
- Present our work regionally and nationally through RCPCH EQIP conference

Ideas for CQI

- Continue to refine the electronic passport as part of the patient EPR with future view of developing secure portal which will enable the passport to be editable by professionals, patients and families. This makes the passport accessible, up to date and accurate with a singular copy available at all times